

Smart solutions for Cold Room Temperature Remote Monitoring

- ✓ Real-time monitoring of room temperatures over web and mobile apps.
- ✓ Upper and lower temperature threshold settings with app based and hooter-based alerts.
- ✓ Graphical plot of temperature over time.
- ✓ Temperature crossing event logs downloadable in MS Excel format.
- ✓ Automated daily email reports.
- ✓ GSM and Wi-Fi based connectivity options with battery backup.



Potts IoT Pvt Ltd was founded in 2019 with the vision to make the comfort and convenience of Internet of Things (IoT) based automation affordable and easily accessible.

Equipped with an in-house skilled electronic hardware and software design engineering team, a group of trained technicians and production workforce, Potts manufacture IoT products of supreme quality that serve the needs of many verticals in the domestic and industrial segments under the 'Potts' brand.



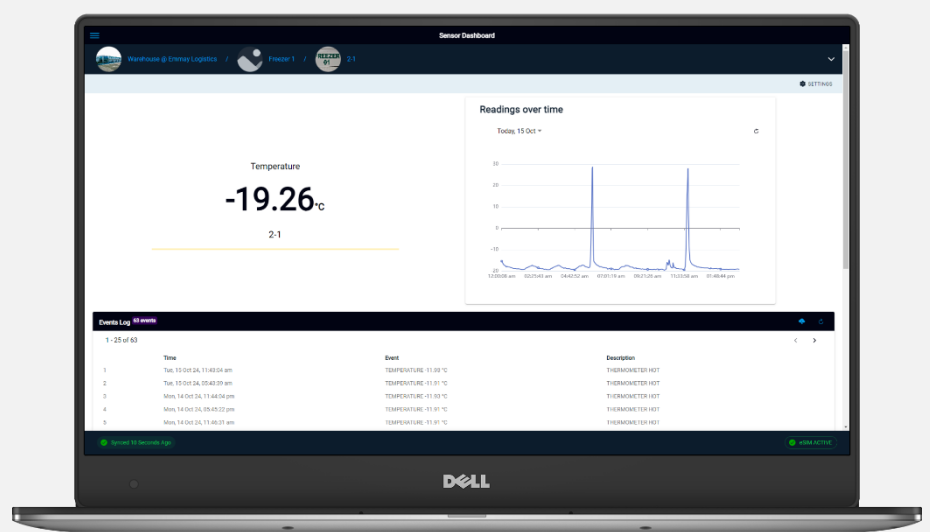
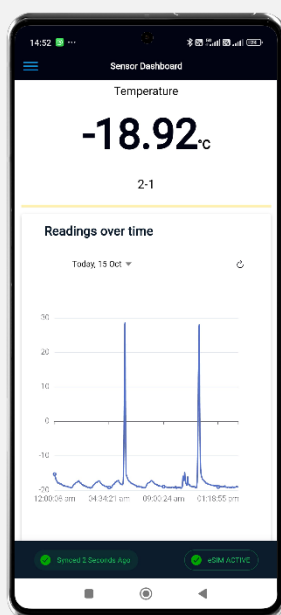
Revolutionizing Cold Room Temperature Monitoring

The problem we solve

Monitoring your cold storage temperatures regularly is imperative if you want to ensure your goods are both safe and of the highest standard. Continuous temperature drops can affect the quality of food, making it unsafe for consumption or use. Regular temperature recordings that show a safe and legal temperature will shield you from blame, without these you could face serious legal consequences.

Cold room temperature monitoring solutions from Potts helps you keep track of your cold room temperatures from anywhere, alerting you and your team locally and remotely if the room temperatures cross set thresholds. With electronic logging and trends, you can always keep tab of your cold room conditions making sure your goods are maintained at the highest quality.

"Remotely monitoring cold room temperatures ensure optimal conditions for sensitive products, preventing spoilage and maintaining quality."



Potts Tree Hub web and mobile apps

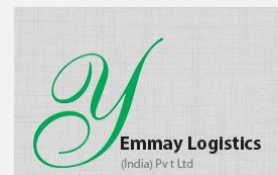
Features and Benefits

- ✓ Platinum RTD based temperature sensing from -40°C to 200 °C.
- ✓ Modular and scalable architecture allows adding more RTDs to the device on-the-go saving on future costs.
- ✓ In-built 3.3Ah Li-FeSO₄ battery backup keeps the device online even during power outages.
- ✓ 64K color touch screen display for localized system monitoring and control.
- ✓ Optional hooter or buzzer based local alerts.
- ✓ Real-time remote monitoring and control over the 'Potts Tree Hub' web and mobile apps.
- ✓ Sensor networking over secure Potts Tree-Wire (RS485), Wi-Fi and GSM networks.
- ✓ Secure cloud communications with TLS v1.2 security.
- ✓ Cloud connectivity over GSM and Wi-Fi networks.
- ✓ Embedded SIM for robust long-term service with multiple operator support. System switches between operators automatically based on network availability for uninterrupted communication.



“Remotely monitoring cold room temperatures ensure optimal conditions for sensitive products, preventing spoilage and maintaining quality.”

Trusted By...



Reach Us

Potts IoT Pvt Ltd

Lord's Tower Building
Vallakalil Junction
Muvattupuzha
Ernakulam, Kerala – 686 661

Toll free: 1800 257 5800

Office: 0485 2833587

Mob: 9207742587

E-mail: info@pottsiot.com

Website: www.pottsiot.com